

STRATHMARTINE COURT DUNDEE

Sheltered Housing



Strathmartine Court was completed in 1979 and provides sheltered housing for people aged 55 years or over. It is situated in a quiet residential area, very close to a bus stop which leads to the city centre and surrounding area. Dundee lies close to the mouth of the River Tay and has a variety of shops, doctors, dentists, opticians, churches, restaurants, library, a Contemporary Arts Centre, a theatre, the McManus Galleries and a railway station. The city is well served with Public Parks, the largest being Camperdown Country Park which offers pleasant walks and a wildlife centre. The scheme has an attractive garden suitable for sitting out. The development has 4 storeys with lift and stair access. There are car parking areas.

There are 29 flats: 10 one bedroom flats suitable for single occupancy and 18 double bedroom flats suitable for couples, 2 of which are fully wheelchair accessible. There is also one 3 bedroom flat. The flats are self contained with livingroom, bedroom/s, kitchen and bathroom. Each flat has full gas central heating and double glazing.

Facilities

The Flats

The flats are centrally-heated and double-glazed for comfort and energy efficiency. The cost of central heating and hot water is included in the monthly rental charge. Cookers in the flats are provided and maintained by Bield. Tenants can enjoy their own space in their individual flats within the complex and join in communal activities as and when they wish.

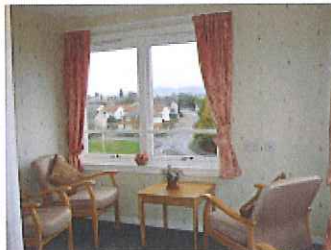
A purpose built laundry facility with fast automatic washing machines and tumble driers is available to all tenants.

A Sense of Community

There is a good community spirit within the Dundee area with a range of different local clubs tenants can become involved in. Strathmartine Court is a very friendly scheme with an active social club which organises a variety of activities throughout the year. The scheme's large, centrally situated lounge gives tenants the opportunity to meet and socialise, whether casually or for more organised events. Friends and family are welcome to join in.

Strathmartine Court is visited every few weeks by a local library who supplies tenants with a changing selection of books.

1 twin-bedded guest room is available for tenants' family and friends who wish to visit for a short stay. This room has an ensuite shower room, kitchen and TV. The room is situated on the ground floor.



Bield Services

Strathmartine Court has a dedicated **Scheme Manager**. They help tenants to maintain their personal safety and the security of their home, respond in an emergency and can assist to arrange social activities. They will also carry out Health & Safety checks of the building and report any repairs required.

Strathmartine Court has a dedicated **Housing Officer** who will normally visit monthly to meet with any tenants who wish to discuss any aspect of their housing. This may include rent, benefits, information about transfers or concerns about any tenancy matters they may have.

Strathmartine Court also has a dedicated **Property Officer** who will normally visit every three months. They ensure that the buildings and communal areas are maintained to a high standard. Your Property Officer will also organise the maintenance of the grounds and authorise any requests for alterations or improvements.

If you wish to see your Housing or Property Officer outwith their visit you can write or telephone them at any time to make an appointment.

Building Maintenance

Bield arranges all repairs and maintenance for both your home and the communal areas of the development. This includes the cleaning of all external windows.

Insurance

As well as full buildings insurance, Bield insures the entire contents of the building including those of tenants' households.

Fire Alarms and Smoke Detectors

A comprehensive fire alarm system gives protection against the dangers of fire. Smoke detectors are fitted in each flat.

Community Alarm Service

Bield's 24 hour emergency call response service Response24 is connected to each flat for added security and support.

Costs

Details of the current monthly charges for Strathmartine Court are detailed on a separate information sheet. Tenants may be entitled to Housing Benefit depending on their financial circumstances. Housing Benefit is administered by Dundee City Council.



Contact details:

Office Address:

**Bield Housing Association Ltd
1 Bonnethill Gardens
1 Caldrum Terrace
Dundee
DD3 7HB**

**Tel: 01382 228911
Fax: 01382 224088**

**Email: info@bield.co.uk
Web: www.bield.co.uk**

Scottish Charity No. SC006878

Scheme Address:

**Bield Housing Association Ltd
Strathmartine Court
532 Strathmartine Road
DUNDEE
DD3 9DG**

Care Commission Office:

**Compass House
11 Riverside Drive
Dundee
DD2 4NY
Tel: 01382 207100**